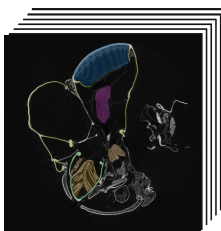


(SR) microCT

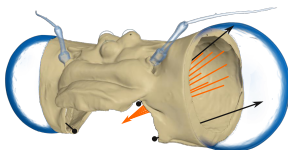
Segmentation ↓

ITK-SNAP



Export 3D volume data of head
(Direct voxel conversion)

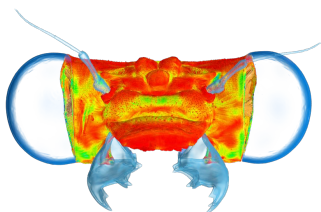
**VOX-FE /
PARAVIEW**



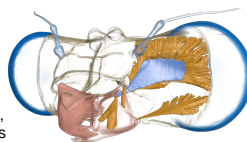
Export strain data for head
capsule and endoskeleton

**VOX-FE /
PARAVIEW**

Relation of character
groups to a specific
function



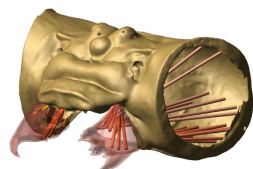
Export 3D surface
model of head capsule,
mandibles and muscles



Blender

extract spatial information
on muscle insertions and
joint locations

Export joint
reaction and
muscle forces



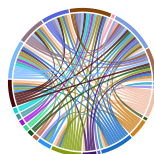
**ADAMS modelling
system**



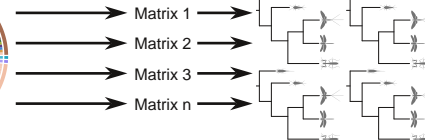
**Bite force
measurements**

Mandible Force sensor

Testing for pairwise
correlations in a
character matrix
containing these
characters in coded
states for all taxa



Matrix reduction
according to
highly significant
pairwise
correlations



Tree inference