

Figure S1

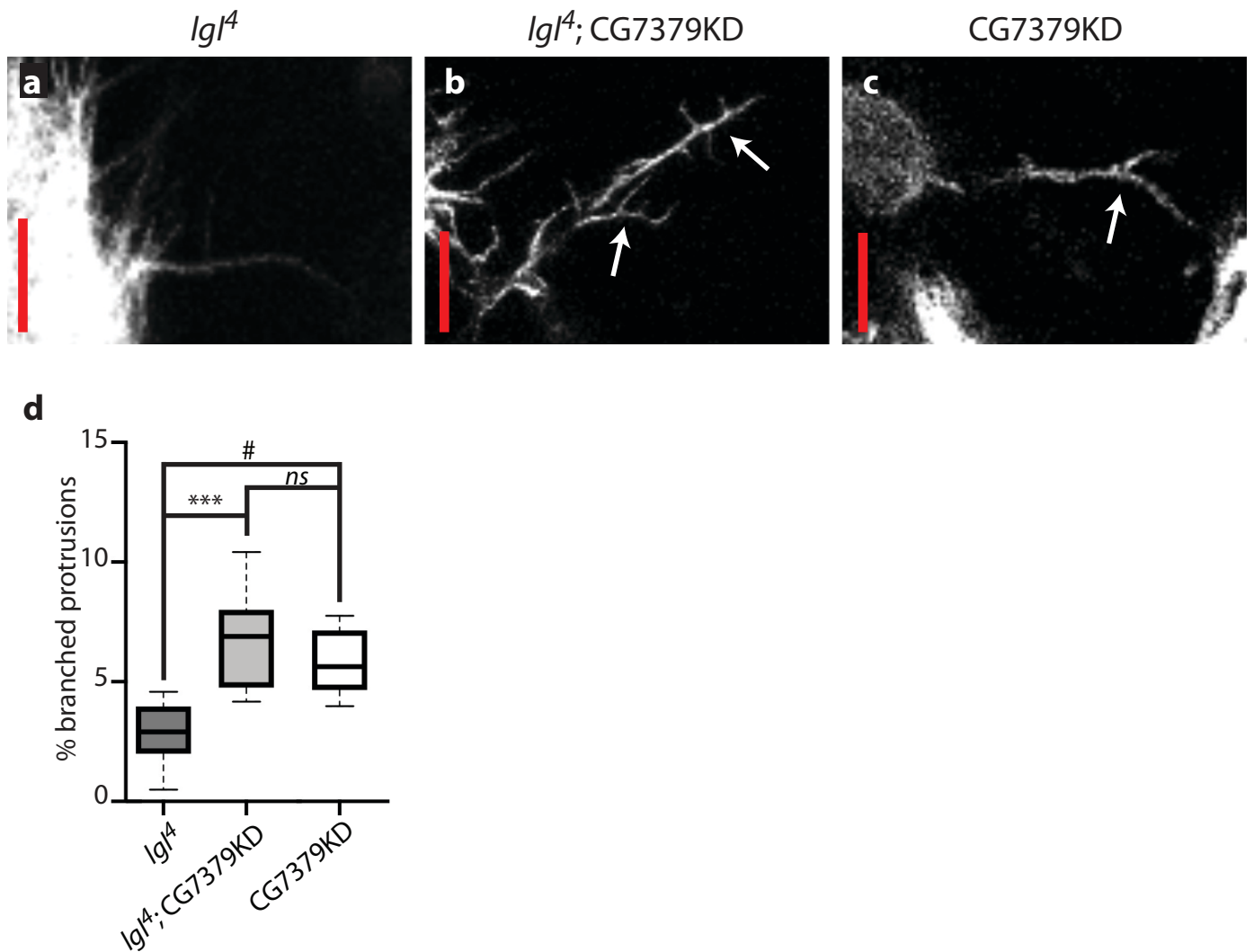


Figure S1: Abnormal protrusion morphology following CG7379KD

(a-c) Example of typical basal protrusion morphology from *Igf4* cells (a), and examples of abnormal branched protrusions from *Igf4*; CG7379KD (b) and CG7379KD (c) cells. Images represent z stack projections of relevant basal confocal slices. Arrows highlight branched protrusions. **(d)**

Quantification of branched protrusion occurrence. $n \geq 100$ protrusions/animal from a minimum of 7 animals/genotype. One-way ANOVA was performed to determine statistical significance. Scale bar = $10 \mu\text{m}$. * $p < 0.05$; ** $p < 0.01$; *** $p < 0.001$; # $p < 0.0001$.