

Supplementary Material for

## Assessing the strength of case growth trends in the coronavirus pandemic

Levente Kriston<sup>1</sup>

<sup>1</sup> Department of Medical Psychology, University Medical Center Hamburg-Eppendorf,  
Martinistr. 52, 20246 Hamburg, Germany

**Correspondence should be addressed to:**

Levente Kriston

Department of Medical Psychology

University Medical Center Hamburg-Eppendorf

Martinistr. 52

D-20246 Hamburg

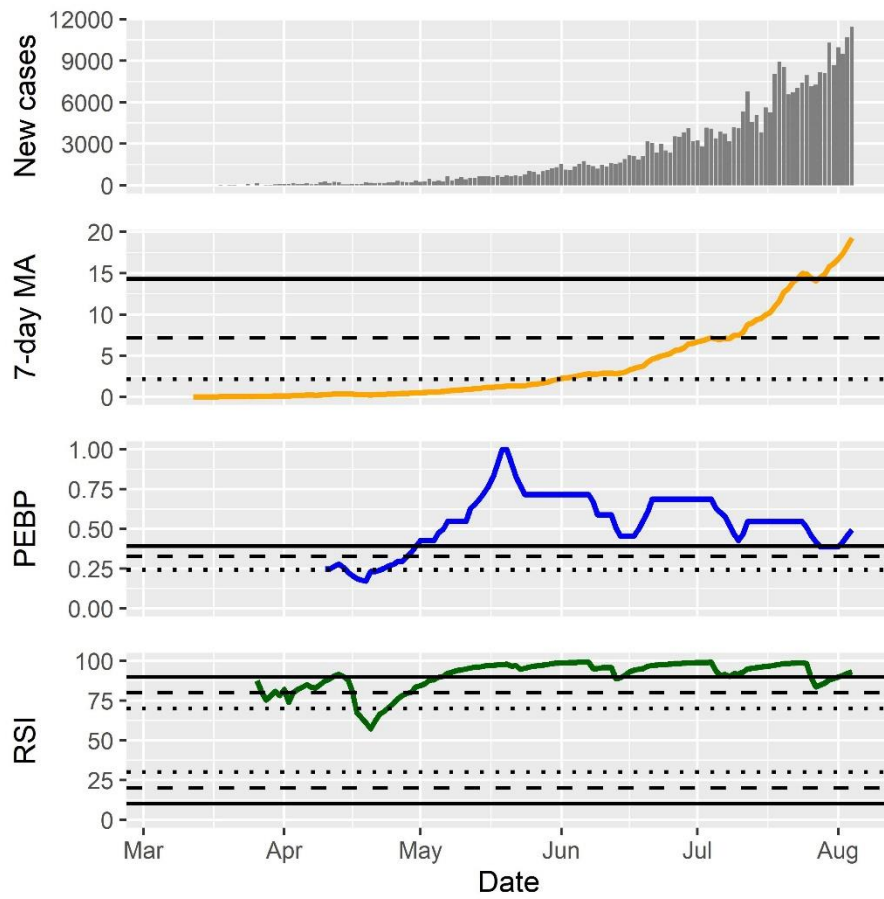
Germany

E-mail: l.kriston@uke.de

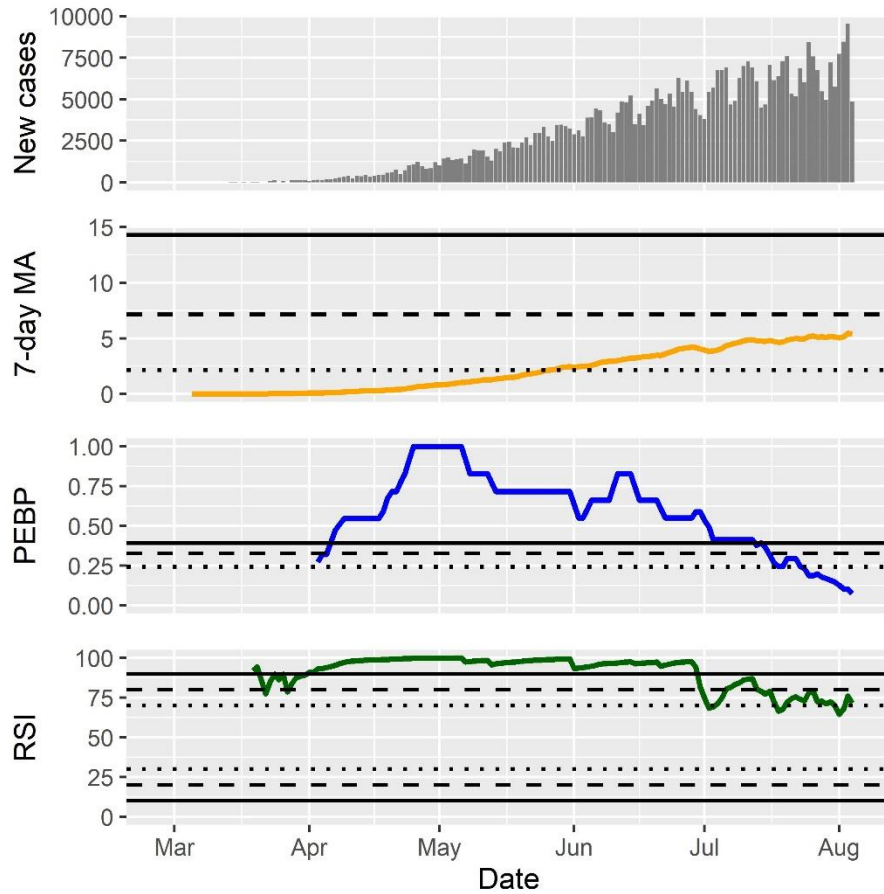
Tel: +49 (0)40 7410 56849

**Includes:**

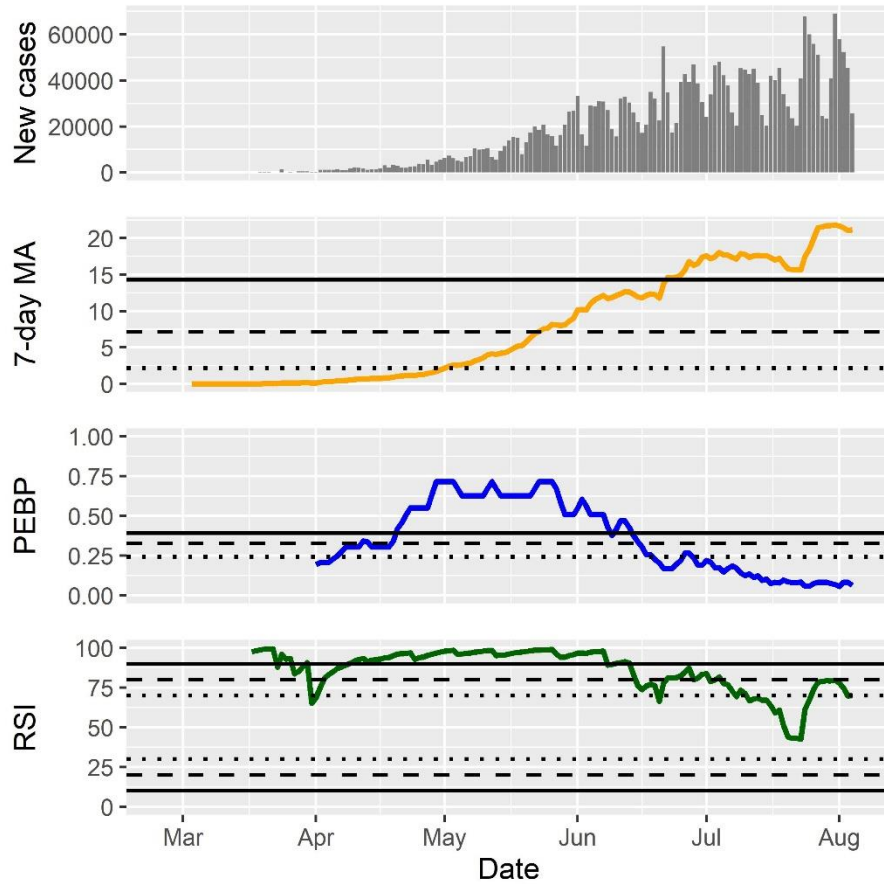
- Supplementary Figures S1 to S12
- Captions for Supplementary Data S1, Supplementary Data S2, and Supplementary Code S1



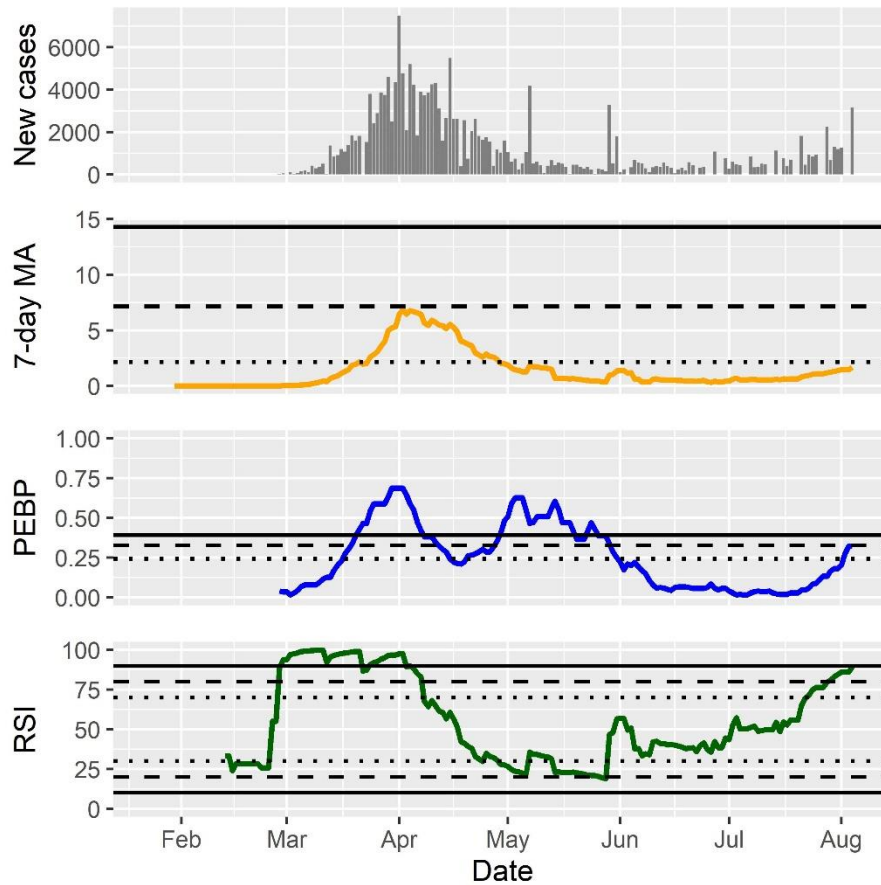
**Fig. S1.** Development of the investigated indicators in Colombia. For the 7-day moving average of the standardized incidence per 100,000 people (MA), dotted, dashed, and solid lines indicate thresholds for considerable, serious, and critical case counts, respectively. For the permutation entropy-based predictability (PEBP) and the relative strength index (RSI), dotted, dashed, and solid lines indicate thresholds for possible, likely, and highly probable trends, respectively.



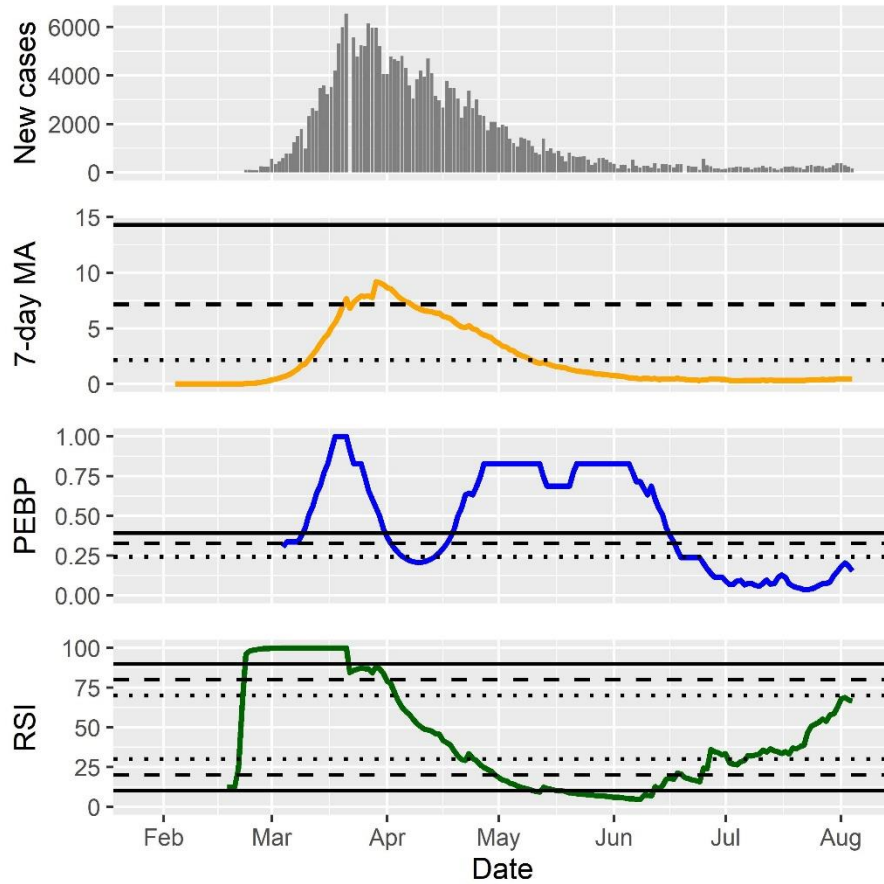
**Fig. S2.** Development of the investigated indicators in Mexico. For the 7-day moving average of the standardized incidence per 100,000 people (MA), dotted, dashed, and solid lines indicate thresholds for considerable, serious, and critical case counts, respectively. For the permutation entropy-based predictability (PEBP) and the relative strength index (RSI), dotted, dashed, and solid lines indicate thresholds for possible, likely, and highly probable trends, respectively.



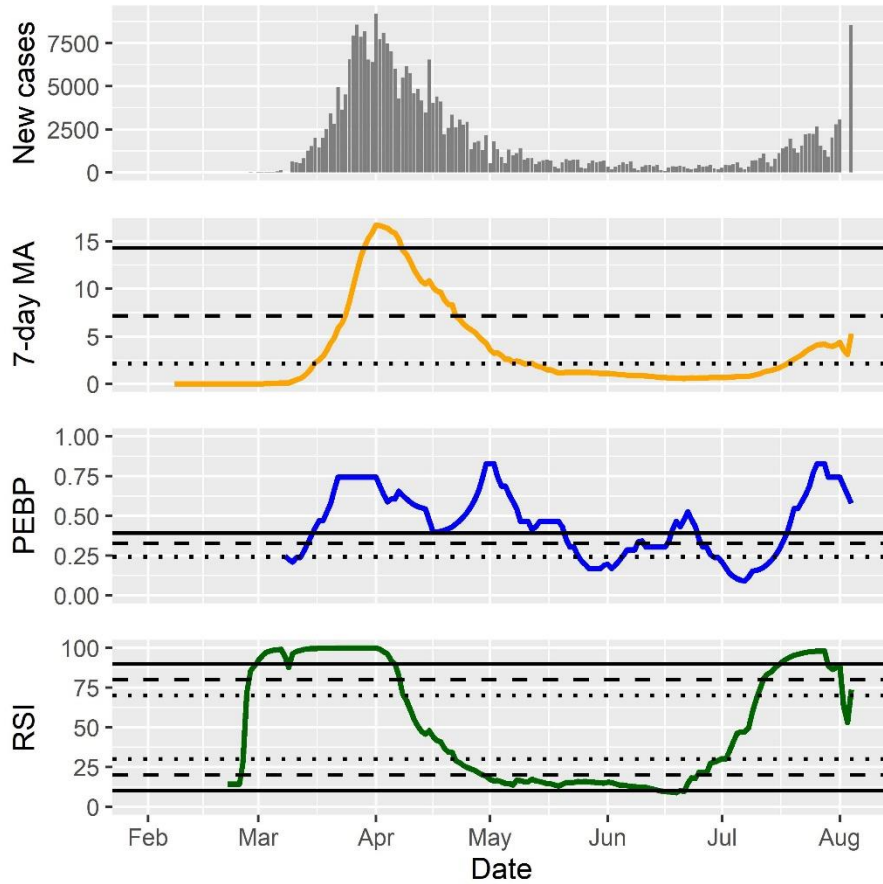
**Fig. S3.** Development of the investigated indicators in Brazil. For the 7-day moving average of the standardized incidence per 100,000 people (MA), dotted, dashed, and solid lines indicate thresholds for considerable, serious, and critical case counts, respectively. For the permutation entropy-based predictability (PEBP) and the relative strength index (RSI), dotted, dashed, and solid lines indicate thresholds for possible, likely, and highly probable trends, respectively.



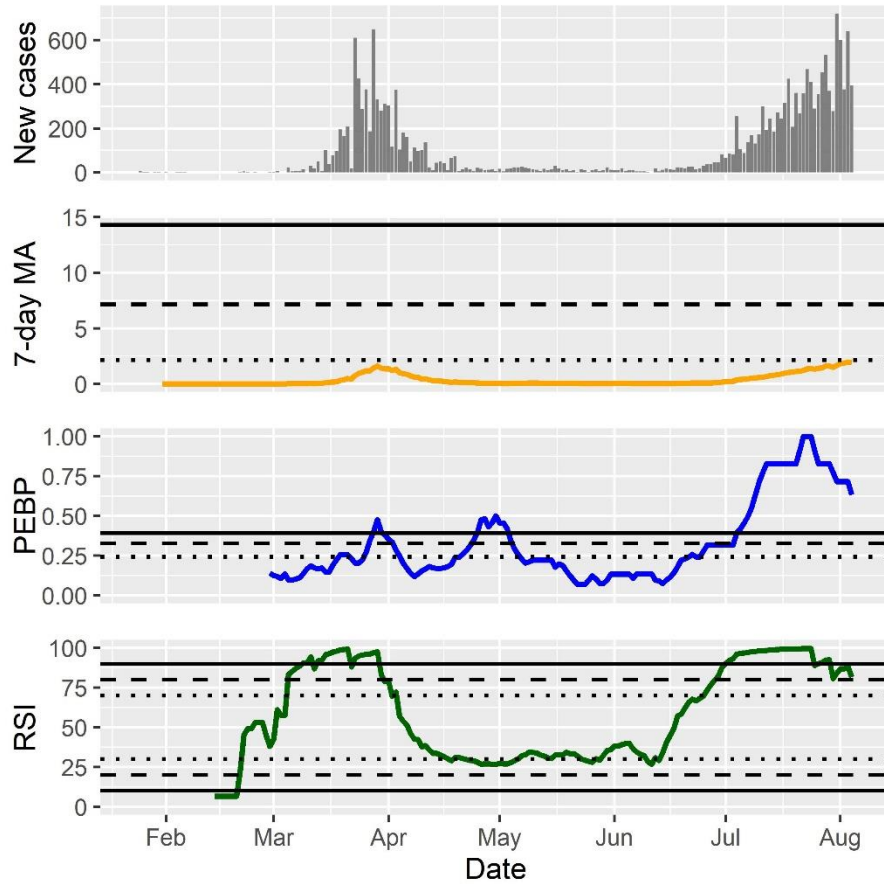
**Fig. S4.** Development of the investigated indicators in France. For the 7-day moving average of the standardized incidence per 100,000 people (MA), dotted, dashed, and solid lines indicate thresholds for considerable, serious, and critical case counts, respectively. For the permutation entropy-based predictability (PEBP) and the relative strength index (RSI), dotted, dashed, and solid lines indicate thresholds for possible, likely, and highly probable trends, respectively.



**Fig. S5.** Development of the investigated indicators in Italy. For the 7-day moving average of the standardized incidence per 100,000 people (MA), dotted, dashed, and solid lines indicate thresholds for considerable, serious, and critical case counts, respectively. For the permutation entropy-based predictability (PEBP) and the relative strength index (RSI), dotted, dashed, and solid lines indicate thresholds for possible, likely, and highly probable trends, respectively.

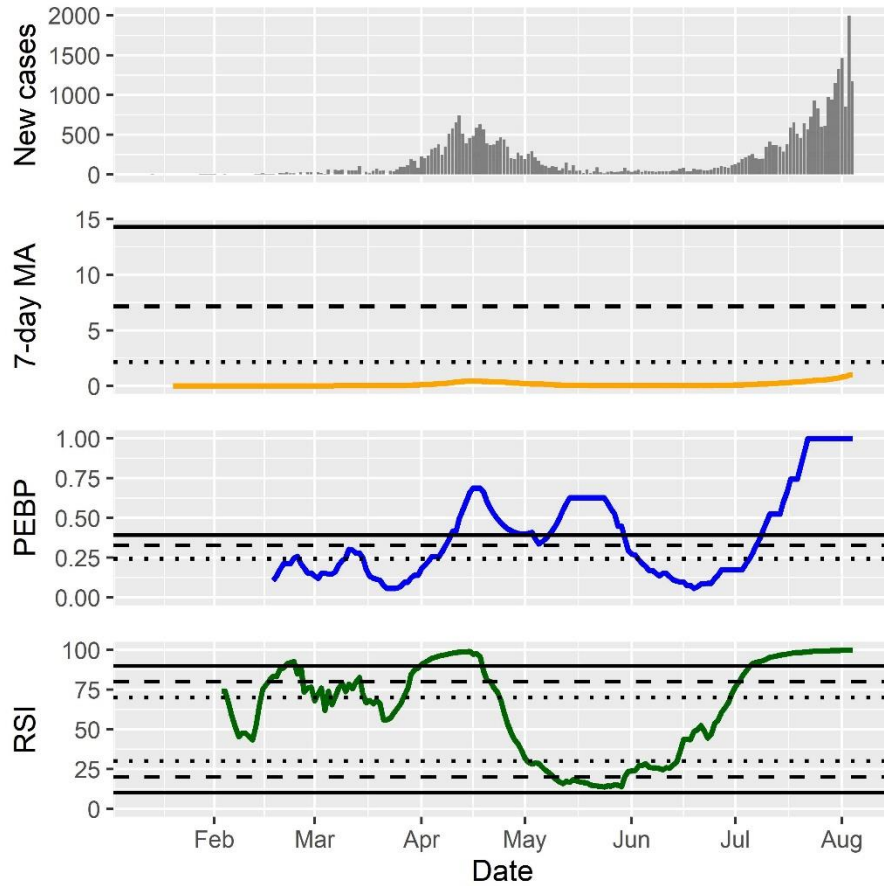


**Fig. S6.** Development of the investigated indicators in Spain. For the 7-day moving average of the standardized incidence per 100,000 people (MA), dotted, dashed, and solid lines indicate thresholds for considerable, serious, and critical case counts, respectively. For the permutation entropy-based predictability (PEBP) and the relative strength index (RSI), dotted, dashed, and solid lines indicate thresholds for possible, likely, and highly probable trends, respectively.

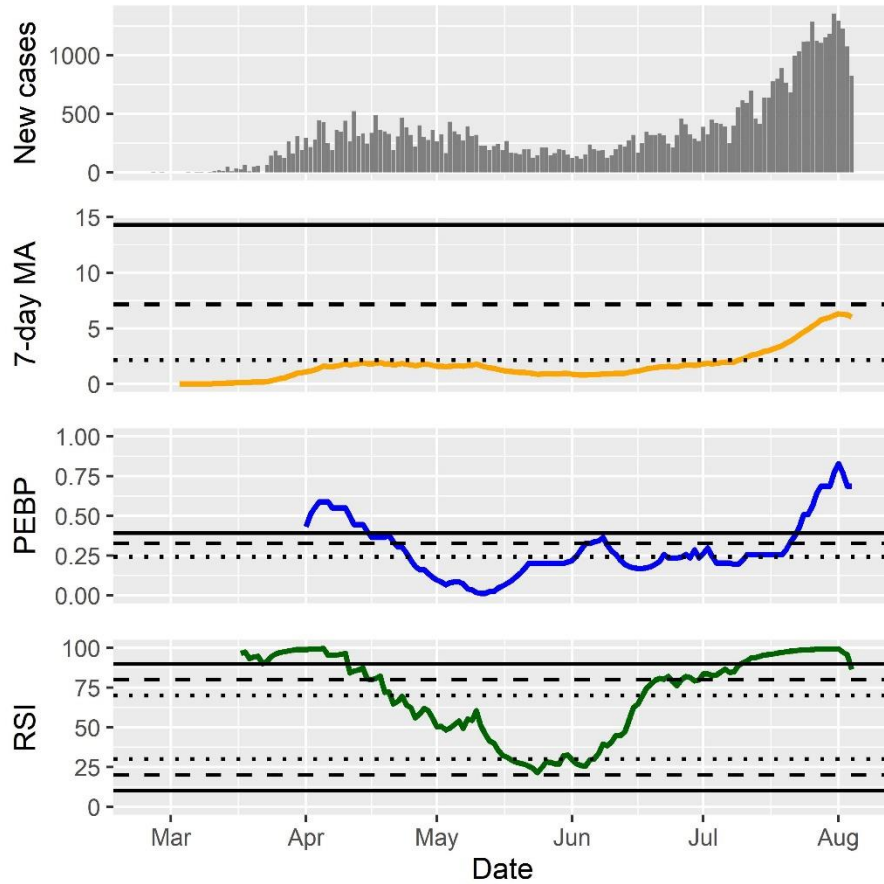


**Fig. S7.** Development of the investigated indicators in Australia. For the 7-day moving average of the standardized incidence per 100,000 people (MA), dotted, dashed, and solid lines indicate thresholds for considerable, serious, and critical case counts, respectively. For the permutation entropy-based predictability (PEBP) and the relative strength index (RSI), dotted, dashed, and solid lines indicate thresholds for possible, likely, and highly probable trends, respectively.

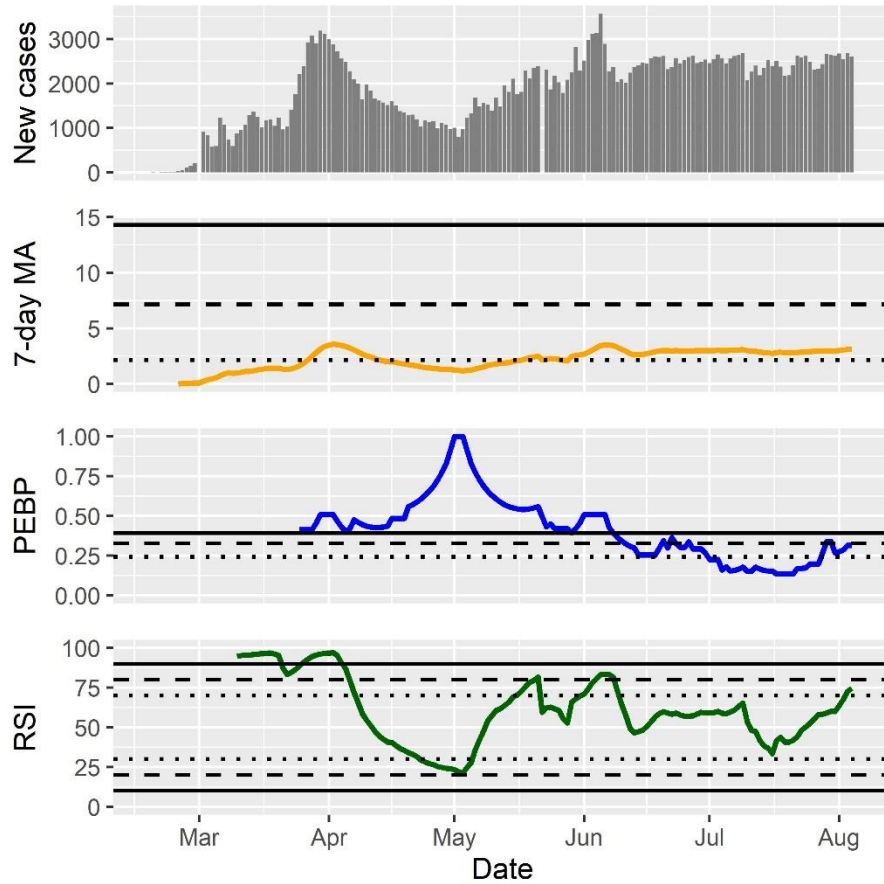




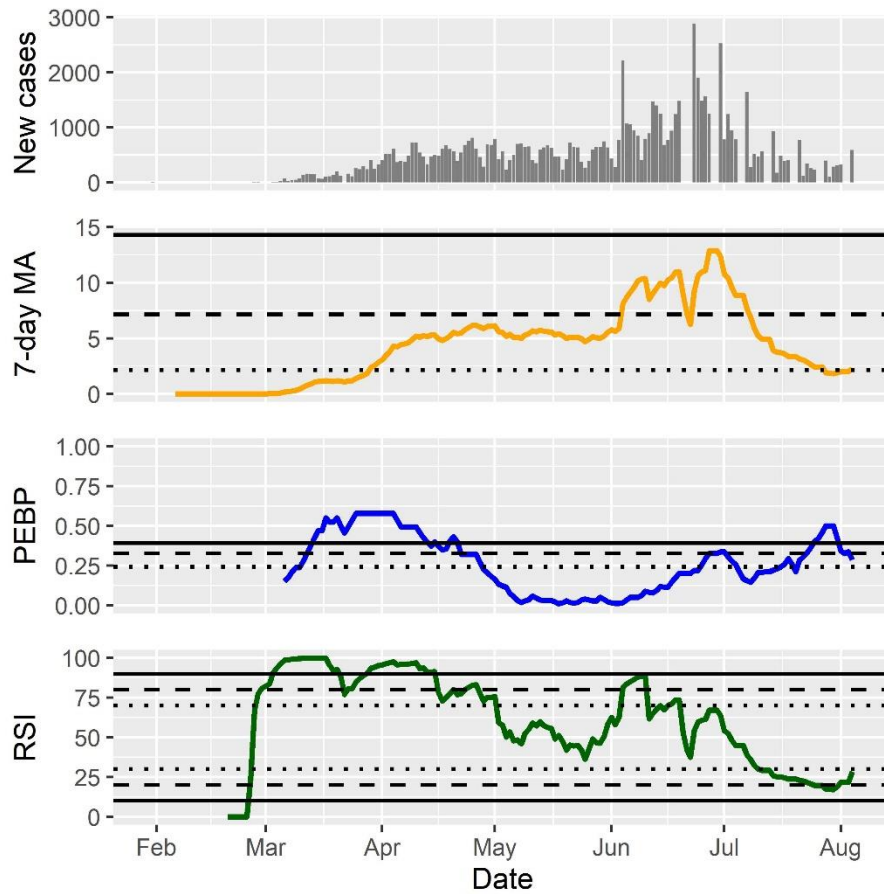
**Fig. S8.** Development of the investigated indicators in Japan. For the 7-day moving average of the standardized incidence per 100,000 people (MA), dotted, dashed, and solid lines indicate thresholds for considerable, serious, and critical case counts, respectively. For the permutation entropy-based predictability (PEBP) and the relative strength index (RSI), dotted, dashed, and solid lines indicate thresholds for possible, likely, and highly probable trends, respectively.



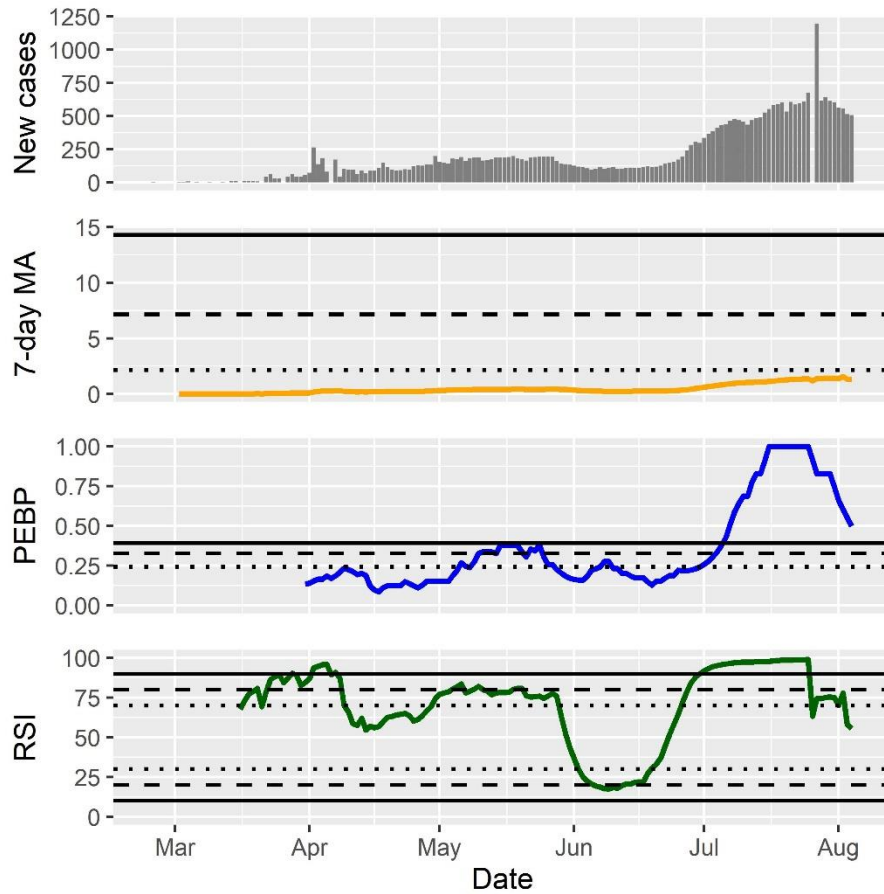
**Fig. S9.** Development of the investigated indicators in Romania. For the 7-day moving average of the standardized incidence per 100,000 people (MA), dotted, dashed, and solid lines indicate thresholds for considerable, serious, and critical case counts, respectively. For the permutation entropy-based predictability (PEBP) and the relative strength index (RSI), dotted, dashed, and solid lines indicate thresholds for possible, likely, and highly probable trends, respectively.



**Fig. S10.** Development of the investigated indicators in Iran. For the 7-day moving average of the standardized incidence per 100,000 people (MA), dotted, dashed, and solid lines indicate thresholds for considerable, serious, and critical case counts, respectively. For the permutation entropy-based predictability (PEBP) and the relative strength index (RSI), dotted, dashed, and solid lines indicate thresholds for possible, likely, and highly probable trends, respectively.



**Fig. S11.** Development of the investigated indicators in Sweden. For the 7-day moving average of the standardized incidence per 100,000 people (MA), dotted, dashed, and solid lines indicate thresholds for considerable, serious, and critical case counts, respectively. For the permutation entropy-based predictability (PEBP) and the relative strength index (RSI), dotted, dashed, and solid lines indicate thresholds for possible, likely, and highly probable trends, respectively.



**Fig. S12.** Development of the investigated indicators in Algeria. For the 7-day moving average of the standardized incidence per 100,000 people (MA), dotted, dashed, and solid lines indicate thresholds for considerable, serious, and critical case counts, respectively. For the permutation entropy-based predictability (PEBP) and the relative strength index (RSI), dotted, dashed, and solid lines indicate thresholds for possible, likely, and highly probable trends, respectively.

## **Further supplements**

**Data S1. (separate file).** Daily new case count data on 4 August 2020 (csv)

**Data S2. (separate file).** Country population data (csv)

**Code S1. (separate file).** R-code used for analysis (pdf)